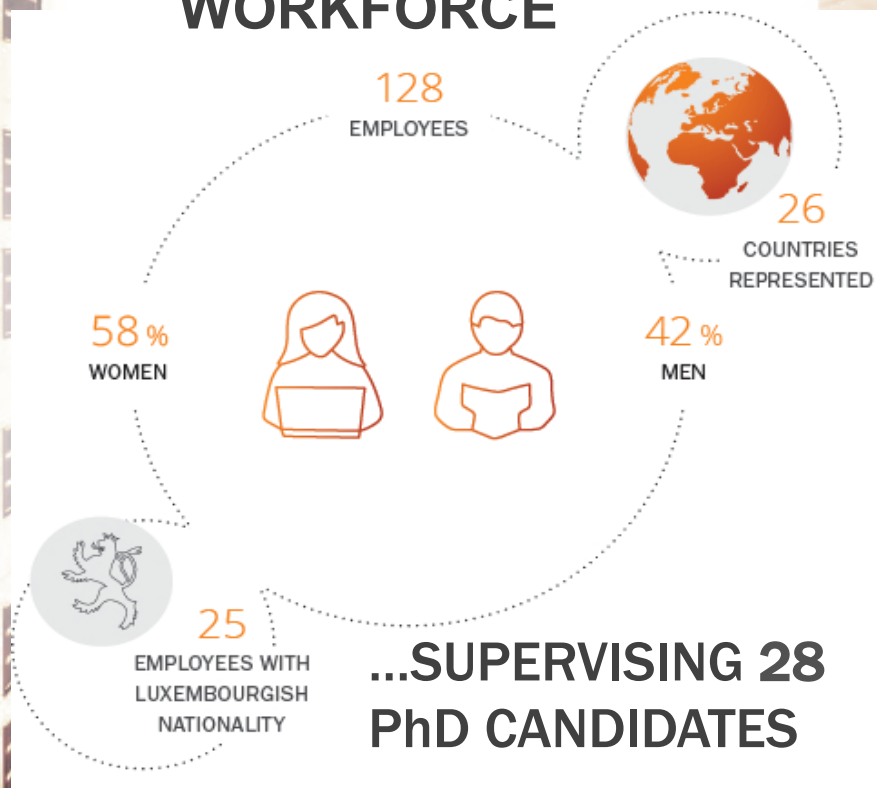


Researchers Without Borders

Paris December 11-12, 2017



LISER'S DIVERSE WORKFORCE



LABOUR MARKET

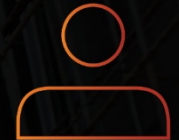
Leading questions:

- Can social welfare discourage people from working?
- Why are women more satisfied in the workplace?
- How do labour policies differ across EU countries?
- How can social partners contribute to gender equality?
- Can public policies lead employers to durably hire older workers?
- Do migrants' intention to settle influence their labour market integration?
- How do childcare policies affect the labour supply of mothers?



PROJECTS

24



RESEARCHERS

25



PUBLICATIONS

31

LIVING CONDITIONS



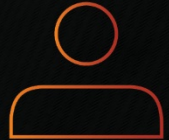
Leading questions:

- How does Guaranteed Minimum Income affect social inclusion?
- How high is wealth inequality?
- What socio-economic factors influence health?
- What drives differences in income inequality in Europe?
- What impact do parental leave policies have on quality-of-life?
- How is multiculturalism shaping social cohesion?



PROJECTS

28



RESEARCHERS

32



PUBLICATIONS

37

URBAN DEVELOPMENT & MOBILITY

Leading questions:

- How are housing policies affecting residential choices and real estate prices?
- How do we accommodate strong economic and demographic growth with quality of life?
- Which environments promote mobility behaviours that favour healthy living?
- How should we manage our cross-border areas?



PROJECTS

21



RESEARCHERS

29



PUBLICATIONS

23

SURVEYS & DATA CENTRE



Distinct to LISER is a survey and data centre team with 17 staff, which over many years, has developed a centre of excellence for survey methodology. It allows LISER to offer academic expertise in the conception of surveys and the collection of data.

In 2016, 8 100 households contacted & 6 400 companies surveyed.

LISER database catalogue: The newly-developed web application allows access to a list of 150+ databases and their associated metadata.

LISER promotes mobility

Mobility in



LISER has a successful visiting scholars programme

Mobility out



Researchers are encouraged to take a scientific leave and develop partnerships with research institutions abroad

LISER Mission

Contribute to building a **sustainable** and **inclusive** society

2018-2021 Vision

The institute aims to develop its missions along 3 main goals:

- 1- Strengthen and enrich its **research infrastructure**
- 2- Consolidate its **national and international scientific positioning** in 5 areas of excellence:
 - Public policies, welfare and socio-economic inequalities
 - Public policies and labour markets
 - Employer-employee relationships
 - Urban policies
 - Spatial mobility
- 3- Align with **national** and **European** priorities and mobilise the **interdisciplinarity** of its teams by orienting their work around 3 axes of priority research:
 - ☐ Crossing Borders
 - ☐ Health and Health Systems
 - ☐ Digital Transformation



Thank for your attention!

www.liser.lu