

What Royal Society funding opportunities are there for me?

Dr Marianna D'Arco – Senior Manager,
UK Grants

THE
ROYAL
SOCIETY





Founded in 1660, the Royal Society is the National Academy of science in the UK, dedicated to promoting excellence in science.

The Society is a self-governing Fellowship supported by 1620 Fellows and Foreign Members. 50 new Fellows are elected each year.

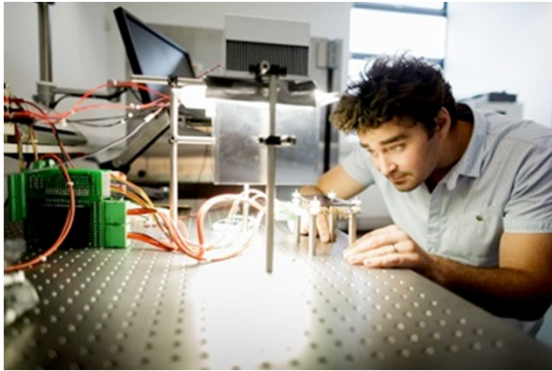
THE
ROYAL
SOCIETY



“Nullius in verba”

Strategic Priorities

- Promoting excellence in science



- Supporting international scientific collaboration



- Demonstrating the importance of science to everyone

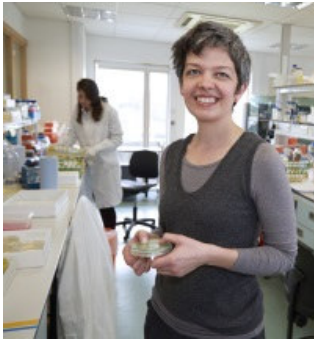


What types of funding are available from the Royal Society?



Supporting the next generation scientists

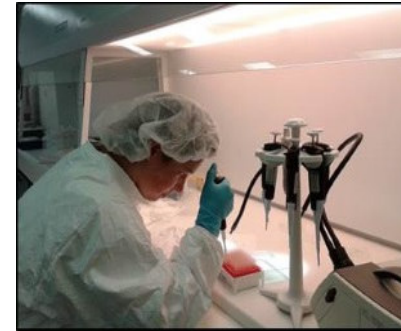
University Research Fellowship



Sir Henry Dale Fellowship



Dorothy Hodgkin Fellowship



“My University Research Fellowship has given me the freedom and leverage to develop a substantial research programme, along with providing the underpinning security to build long-term research plans.”

Dr Michelle Moram
University Research Fellow
Imperial College London

THE
ROYAL
SOCIETY



Who can apply ?

University Research Fellowships

- 3-8 years postdoctoral experience
- Long-term, flexible funding
- Opens Summer 2018

There are no nationality restrictions

Sir Henry Dale Fellowships

- Up to 7 years postdoctoral experience
- Long-term funding for biomedical research
- Preliminary applications ~ April 2018

Dorothy Hodgkin Fellowships

- Up to 6 years postdoctoral experience
- For scientists who require flexible working
- Opens late 2018

“I've taken 6 months paternity leave during my URF; my partner and I split the parental leave 50/50. The Royal Society have completely supported of this. For both maternity and paternity leave, the duration of the fellowship is simply extended accordingly.”

Dr Toby Cubitt
University Research Fellow
University College London

THE
ROYAL
SOCIETY



‘Starter’ Research Grants

- Only 1st year Research Fellows eligible
- Funding for research-related costs, including postgraduate students
- Up to £150,000/€176,000 for 48 months
- Invitation to apply

Tier 1 Exceptional Talent Visa

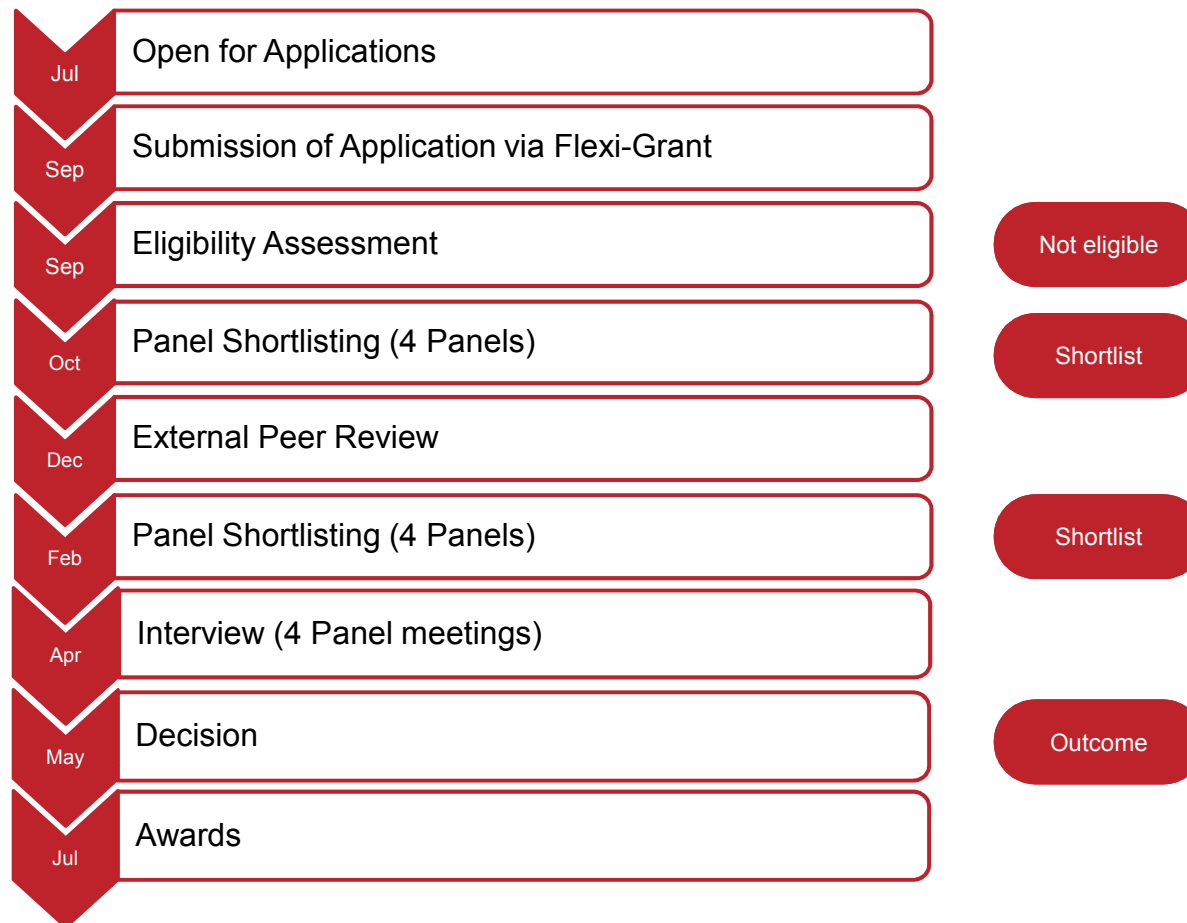
- The Royal Society is recognised as a ‘competent body’ able to endorse applications for Tier 1 visas from individuals who have shown exceptional talent or exceptional promise within the natural and medical sciences.
- Details on Home Office website www.gov.uk/tier-1-exceptional-talent - get in contact with us

The Royal Society endorsed Professor James Rothman's Tier 1 application in 2013.

In 2013, Professor Rothman applied for a Tier 1 (Exceptional talent) visa in order to facilitate a collaborative project with The Institute of Neurology at University College London.



Application Process



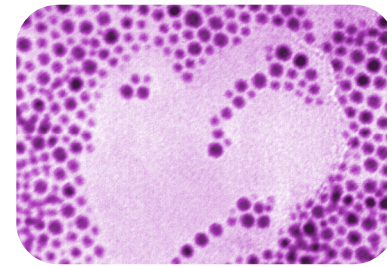
Applications – What are we looking for?



Excellent scientific merit



Track Record



Creativity



Validity of hypothesis



Career development



Host institution

Hints & tips!



Read the
scheme notes



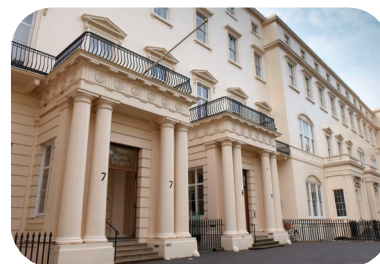
Write a good
lay summary



Be
enthusiastic



Leave plenty
of time



Contact us

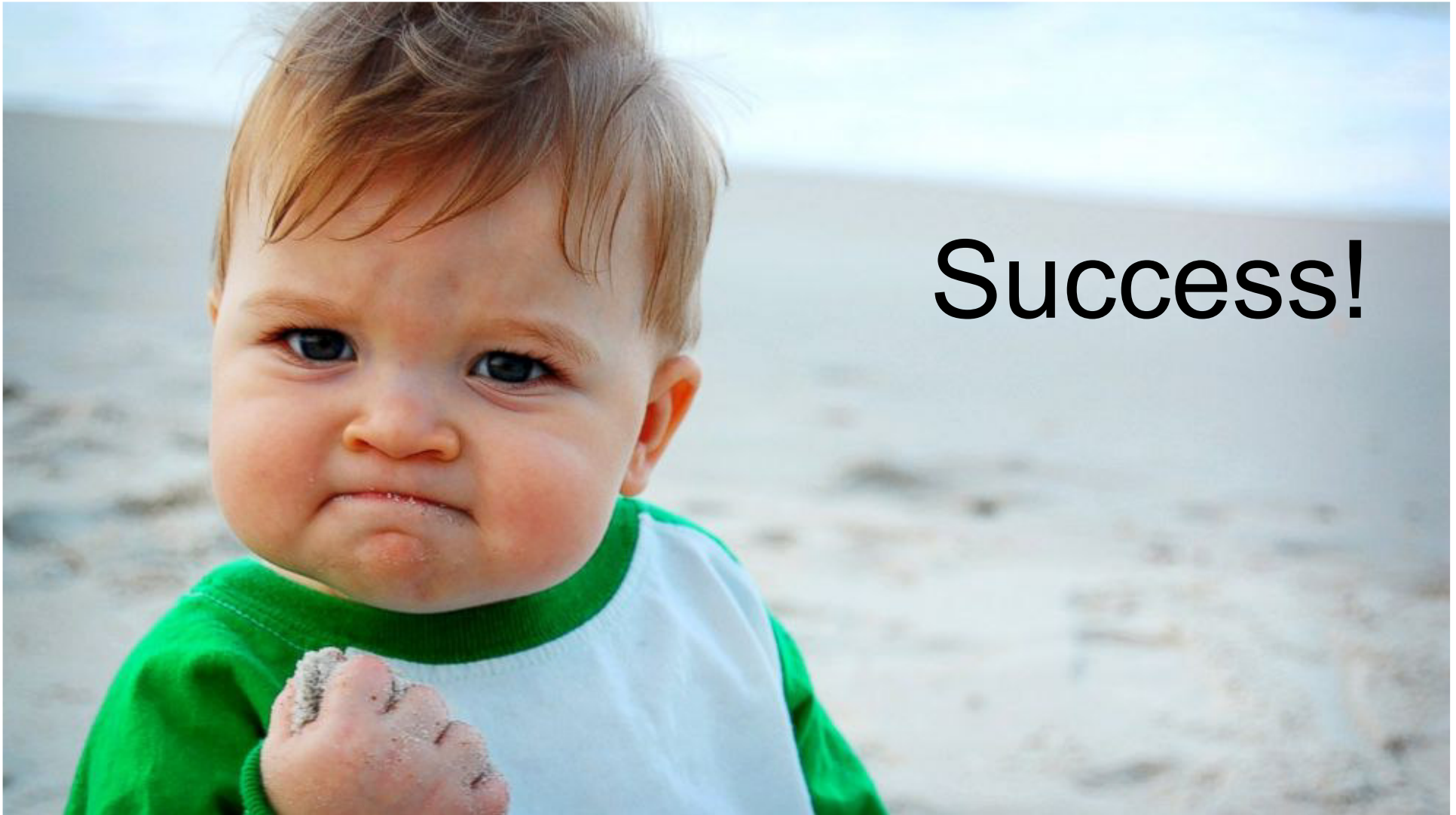
Interviews

- The interview will be conducted by a panel of committee members
- Two main assessors will lead the interview, but all panel members can ask questions
- Candidates will be asked to give a brief overview of their applications and area of research

The questions will focus on the following issues:

- The science of the application
- Developments since the submission of the application
- The choice of host institution/research group
- The route of independence
- Any issues needing further clarification





Success!

Frequently Asked Questions

Success rates

- Varies from scheme to scheme and year to year depending on the number of applications, awards available...
- Remember – don't be put off by statistics, you need to apply to be successful!

Diversity

- The Society recognises that many talented individuals do not fulfil their scientific potential due to various issues and barriers and we are committed to helping to put this right.
- We are currently addressing this through measures such as improving promotion and reviewing our selection processes.

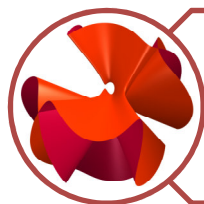
Feedback & Re-applying

- Limited feedback is available for those who are unsuccessful (depending on the stage reached in the application process).
- For most of our schemes we welcome people to reapply.
- Get in contact with us and speak to the relevant Scheme Manager.

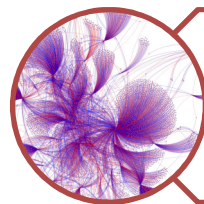
Why apply for a Royal Society Early Career Fellowship?



Prestigious



Flexible



Added value



2016 New Research Fellows' Induction Day

“My University Research Fellowship provided me the opportunity to pursue independent blue-skies and applied research, while connecting me to a large interdisciplinary network of world-class scientists”

Dr Steven Spoel
University Research Fellow
University of Edinburgh



Contact details

royalsociety.org/grants

URF@royalsociety.org

(0044) 20 7451 2500

Twitter: [@royalsociety](https://twitter.com/royalsociety)

Scientist Newsletter: royalsociety.org/stay-in-touch/email-newsletters/